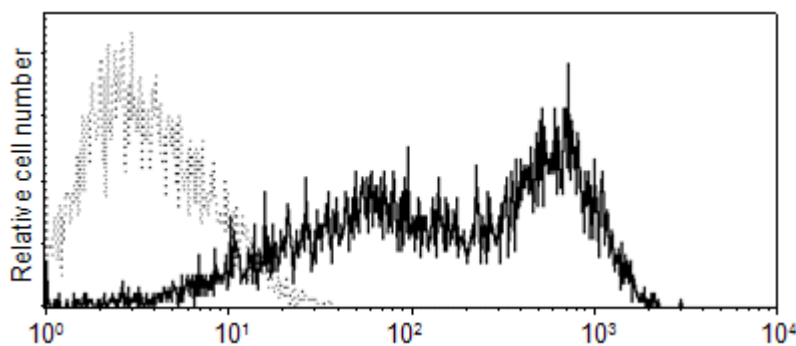


# Anti-H1(California/06/2009)



Product Name	Anti-H1(California/06/2009(H1N1))
Catalog No	IT-003-001M5-FITC
Source	Mouse monoclonal antibody, clone 2F3
Isotype	IgG2a
Formulation	Each vial contains 50 µg FITC-labeled IgG in 200 µl PBS with 40% glycerol
Immunogen	Recombinant HA1(A/California/06/2009(H1N1)) protein (a.a. 18-344)(Genebank accession <a href="#">ACP41935</a> ).
Applications	FC, ELISA, Neut., IP, IF etc.
Epitope	Conformational
Specificity	Reacts specifically with H1(2009 H1N1, or swine flu) , not react with seasonal strains. No cross-reactivity to other subtypes.
Storage	Store at 4°C; <u>DO NOT FREEZE</u> ; stable for 6 months from the date of shipment. Non-hazardous. No MSDS required.
Use Limitation	For research use only, not for use in diagnostic procedures.



Profile of swine flu HA-transfected 293 cells analyzed by flow cytometry

(FITC-labeled antibody at 1:250 dilution)